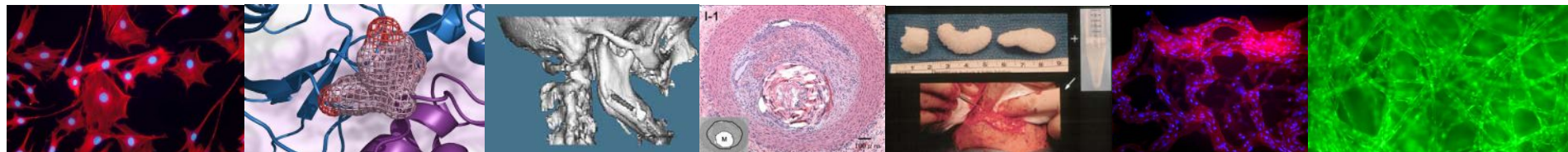


6th ANNUAL CALIFORNIA TISSUE ENGINEERING MEETING
TE_m In association with **LAtai**
Los Angeles Tissue Engineering Initiative



UCLA ACKERMAN GRAND BALLROOM

NOVEMBER 30 & DECEMBER 1, 2007

Keynote Speaker

Hong Wu, M.D., Ph.D.

Professor of Molecular and Medical Pharmacology, UCLA David Geffen School of Medicine
Director, UCLA Molecular Genetics Technology Center
Co-Director of Cancer Stem Cell Program, UCLA Institute for Stem Cell Biology and Medicine

Session Invited Speakers

**THE CALIFORNIA TRIPLE HELIX IN
REGENERATIVE MEDICINE:**

Kathryn Atchison, D.D.S., M.P.H.

UC Los Angeles

Sharon Stevenson, D.V.M., Ph.D.

Okapi Venture Capital

Mike Siani Rose

Theregen

Dawn Applegate

RegeneMed

BIOMATERIALS ENGINEERING:

Annelise Barron, Ph.D.

Stanford University

Karen Christman, Ph.D.

UC San Diego

**STEM CELL BIOLOGY & TISSUE
ENGINEERING:**

Amander Clark, Ph.D.

UCLA Stem Cell Institute

Karl Deisseroth, M.D., Ph.D.

Stanford University

CYTOKINES & CELL SIGNALING:

Manuela Martins-Green, Ph.D.

UC Riverside

Ranjan Gupta, M.D., Ph.D.

UC Irvine

Registration & Abstract Submission, please visit

[HTTP://WWW.CALTEMTG.ORG](http://www.caltemtg.org)

For inquiries, please contact us at: CALTEMTG@YAHOO.COM

Hosted by:



Sponsored by:

Baxter

Scientific Advisory Committee

Gregory Evans, UC Irvine

Warren Garner, USC

Kevin Healy, UC Berkeley

Michael Longaker, Stanford

Jonathan Mansbridge, Tecellact, LLC

Manuela Martins-Green, UC Riverside

Nathalie Gosset, Alfred Mann Institute

Hari Reddi, UC Davis

Susan Riley, Cytori Therapeutics

Anthony Ratcliffe, Synthasome

Robert Sah, UC San Diego

Bill Tawil, Baxter BioScience

Ben Wu, UC Los Angeles